

CASE STUDY – ALVASTON HALL HOTEL & SPA

Project: Existing Pool Facility, Cheshire UK
 Pool/s type: 1 pool, 175m³
 Sanitation type: Calcium Hypochlorite
 pH correction: Sodium bisulphate



Figure 1 – The 2-membrane system at Alvaston Hall

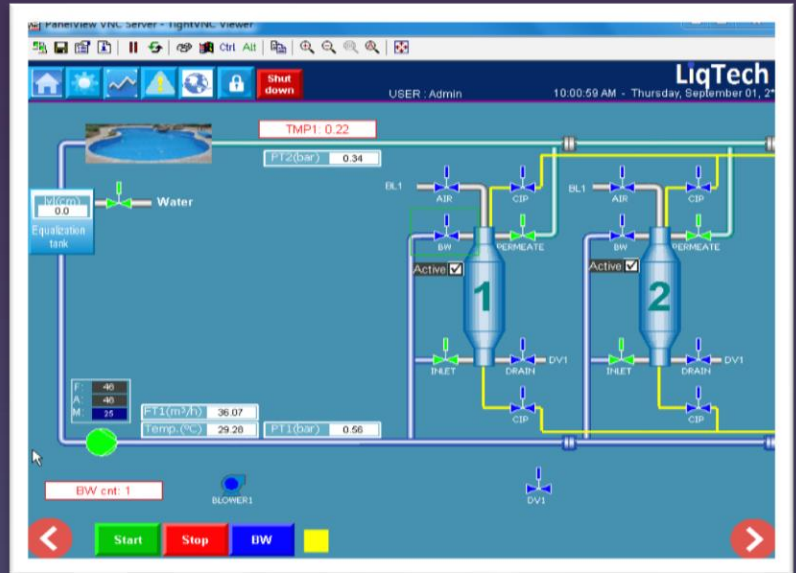


Figure 2 – above, the remote display

Figure 3 – below, Jason Bassett of Total Pool and Henrik Horst of Liqtech discuss the installation of the first UK unit.

Alvaston Hall Hotel, part of the Bourne Leisure Group decided to upgrade their pool filtration system. In the confined space of the plant room, the Ceramiflo filters easily replaced the 3-existing high-rate sand filters. The driver was to achieve excellent filtration above the level achieved by high rate sand filters.

Alvaston Hall opted for the Ceramiflo system, with its unique ceramic membrane and compact design, it fitted easily into the plant room, requiring just 30% of the footprint of medium rate sand filters. Medium rate sand filters would not fit in the current plant room.

In addition to clearer water, filtered down to 3 microns, the hotel team benefitted from the fully automated backwash programme, which also used less water and energy than conventional backwashing. Due to the lack of organic matter held on the filters, the chemical demand was less.



“the ceramic filtration system is a breath of fresh air compared to traditional systems. It’s 3 main benefits for me are the energy saving it gives us which helps to reduce our carbon footprint which is a big area of focus for Warner leisure, its reduction in labour hours that are normally required with the backwashing and maintenance etc, and the water quality is second to none – crystal clear” Steve Hinton Leisure Manager, Alvaston Hall Hotel & Spa